



SAP Data privacy and compliance

Daniel Parker | March 2025

The background is a solid blue color with a complex pattern of white geometric shapes and lines. These include small squares, circles, and triangles scattered throughout, as well as larger, faint, overlapping shapes like hexagons and octagons. A series of thin, white, curved lines sweep across the image from the bottom left towards the top right, creating a sense of motion and depth. The overall effect is a high-tech, digital aesthetic.

Data Privacy awareness across Australia



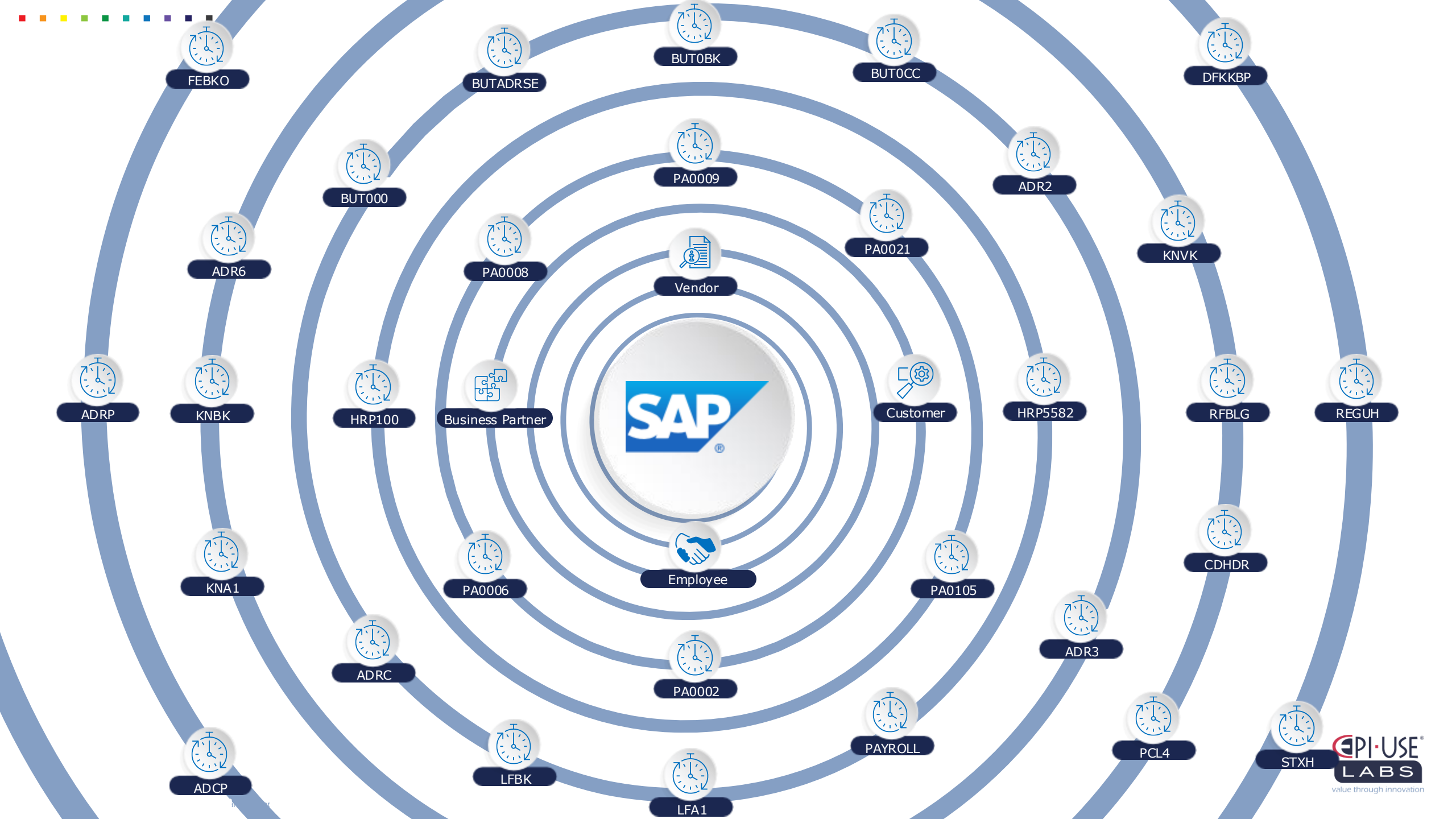
- Well known headlines
 - Optus, Medibank & Latitude
- Notifiable Data Breaches scheme in place since February 2018
- OAIC September 2024 report on January-June 2024 breaches:
 - Notifications up 9% & highest since 2020
 - 37% affected over 100 people
 - 1 incident affect 10 million Australians
 - 67% from a malicious or criminal act
 - Contact information remains most common type of PII
- Some strength in recent Government direction
 - 'hack the hackers'
 - 'helping to make Australia the most secure place to connect online'

Why is this important to my organisation?

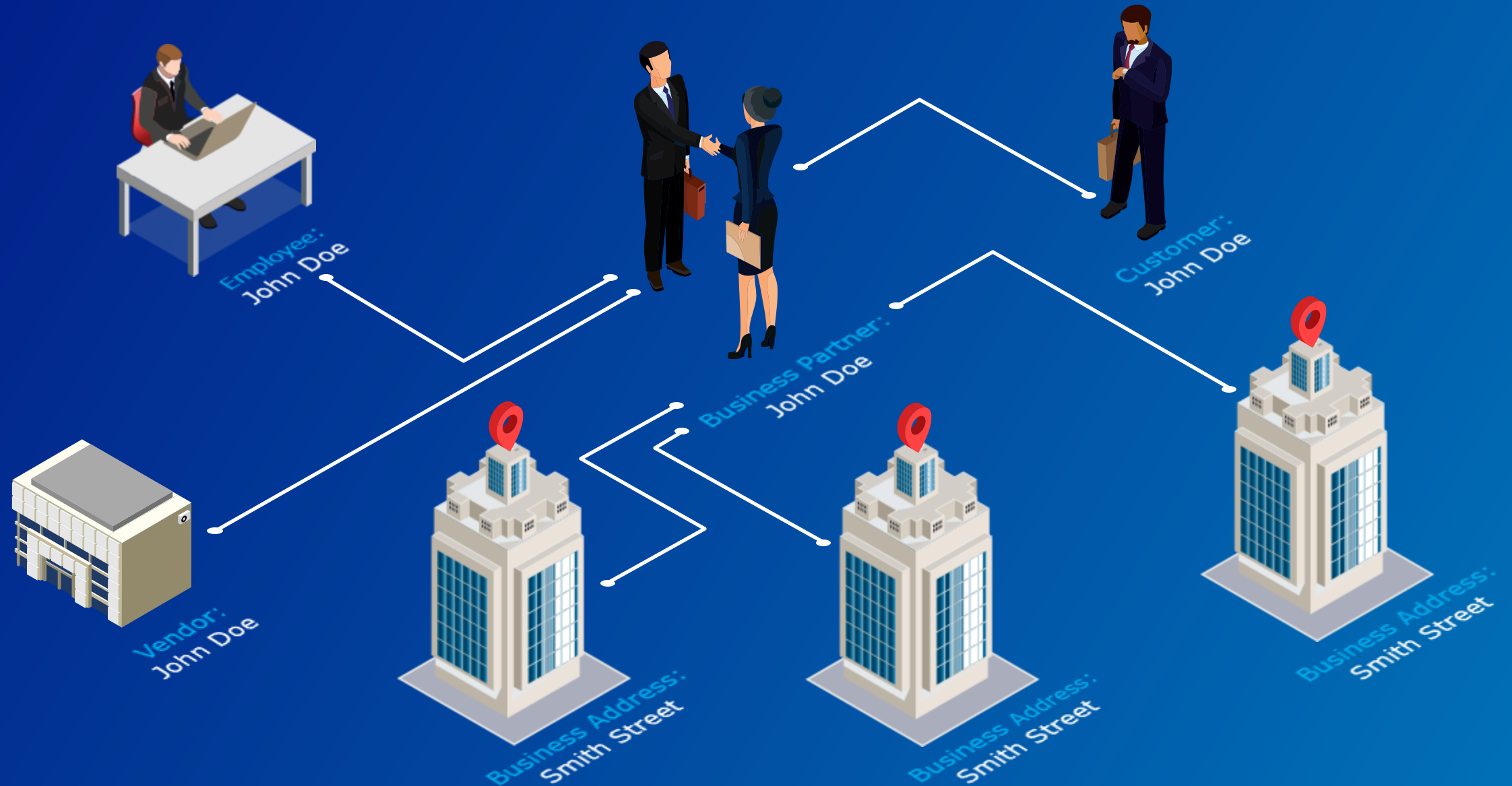
“After 6 years of the NDB scheme, we expect entities to comply with their obligations. It is no longer acceptable for privacy to be an afterthought; entities need to be taking a privacy-centric approach in everything they do.”

Carly Kind
Australian Privacy Commissioner

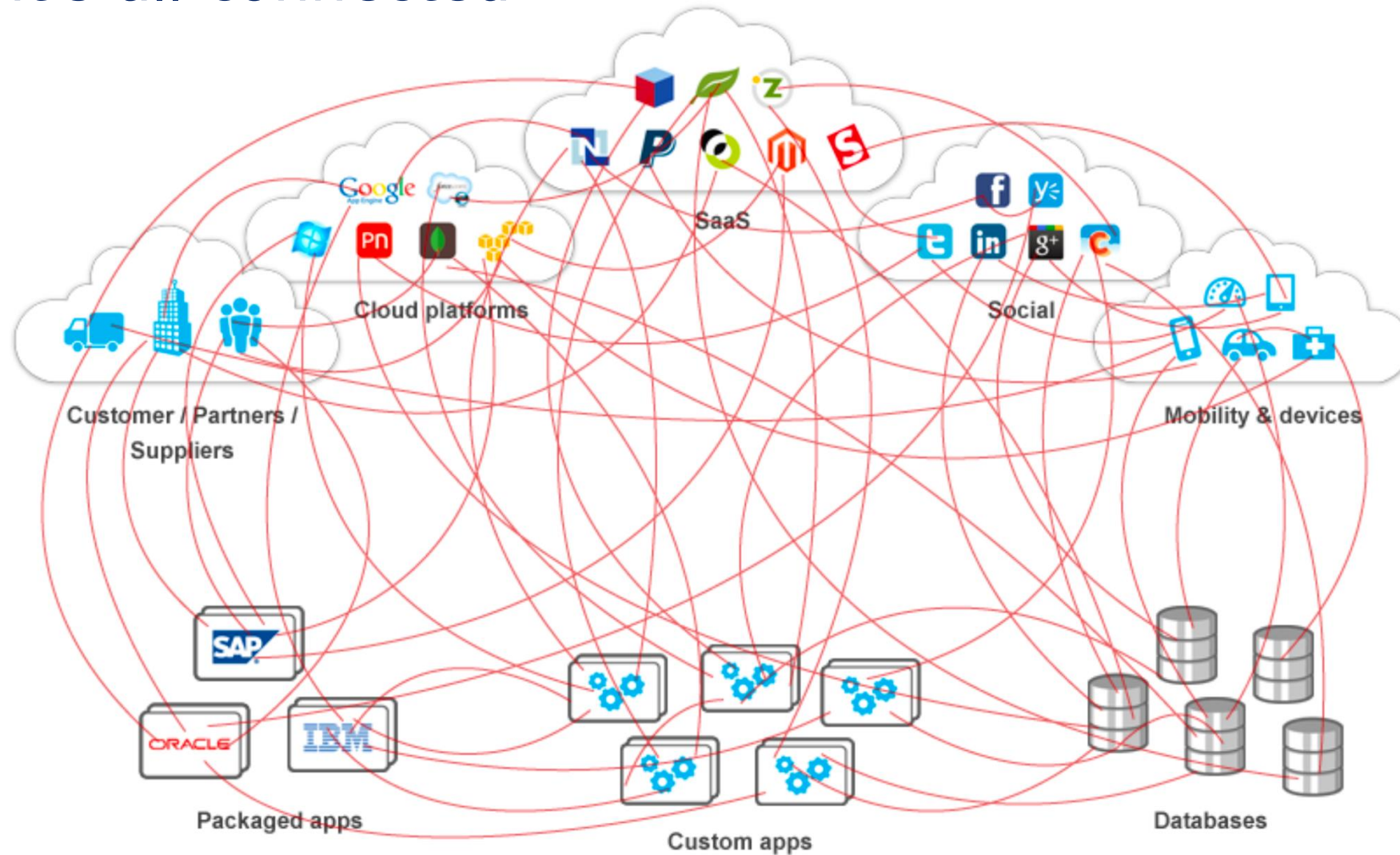
I've been running SAP for 15 years now; how much Personally Identifiable Information (PII) do I have?



SAP Data – it's all connected



SAP – it's all connected



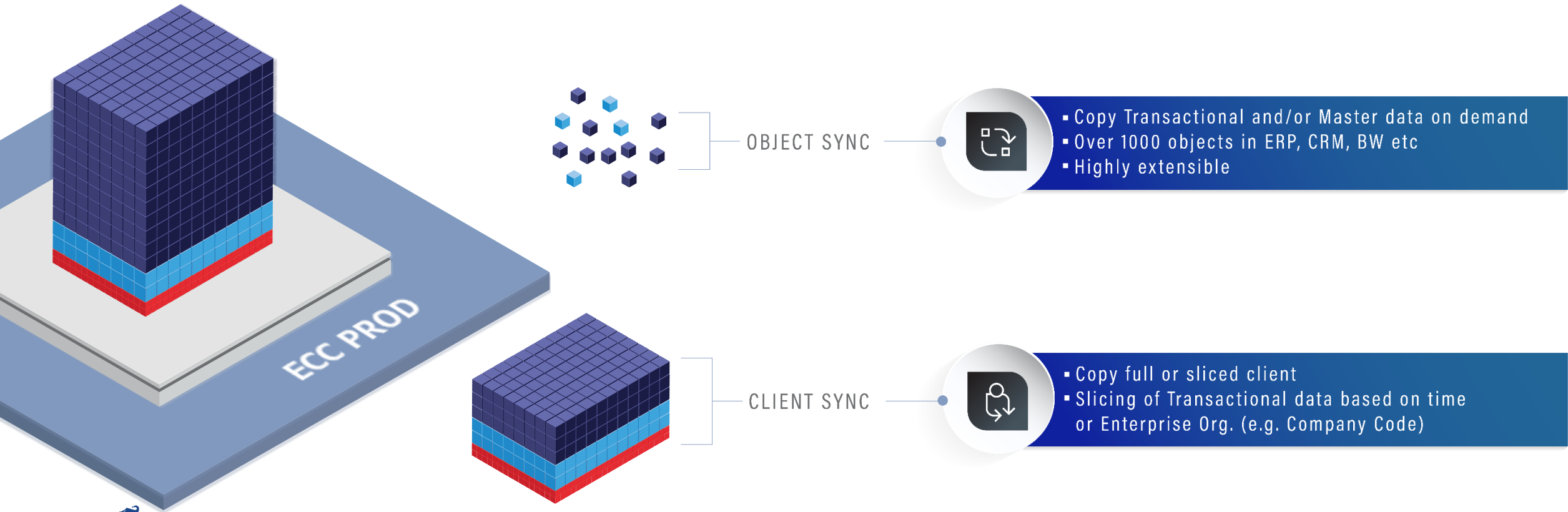


Four actions to manage privacy and compliance

1. Minimize the amount of data copied out of production
2. Identify and map the PII data in your SAP instance
3. Remove real personal data from test and development systems
4. Removal of personal data in production when no longer justified to hold

Minimize the amount of data copied out of production

Data Sync Manager – test data management and sub-setting

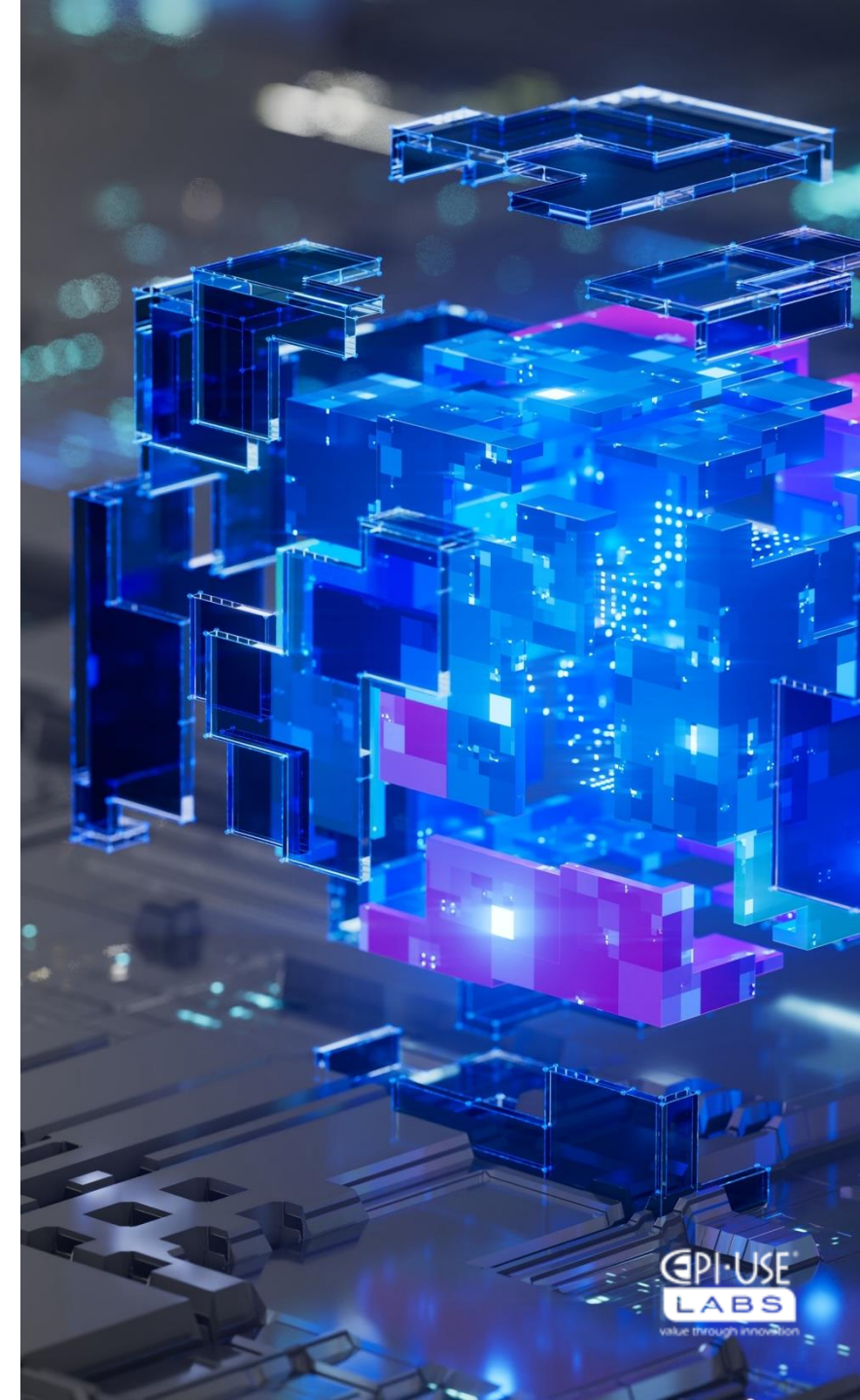


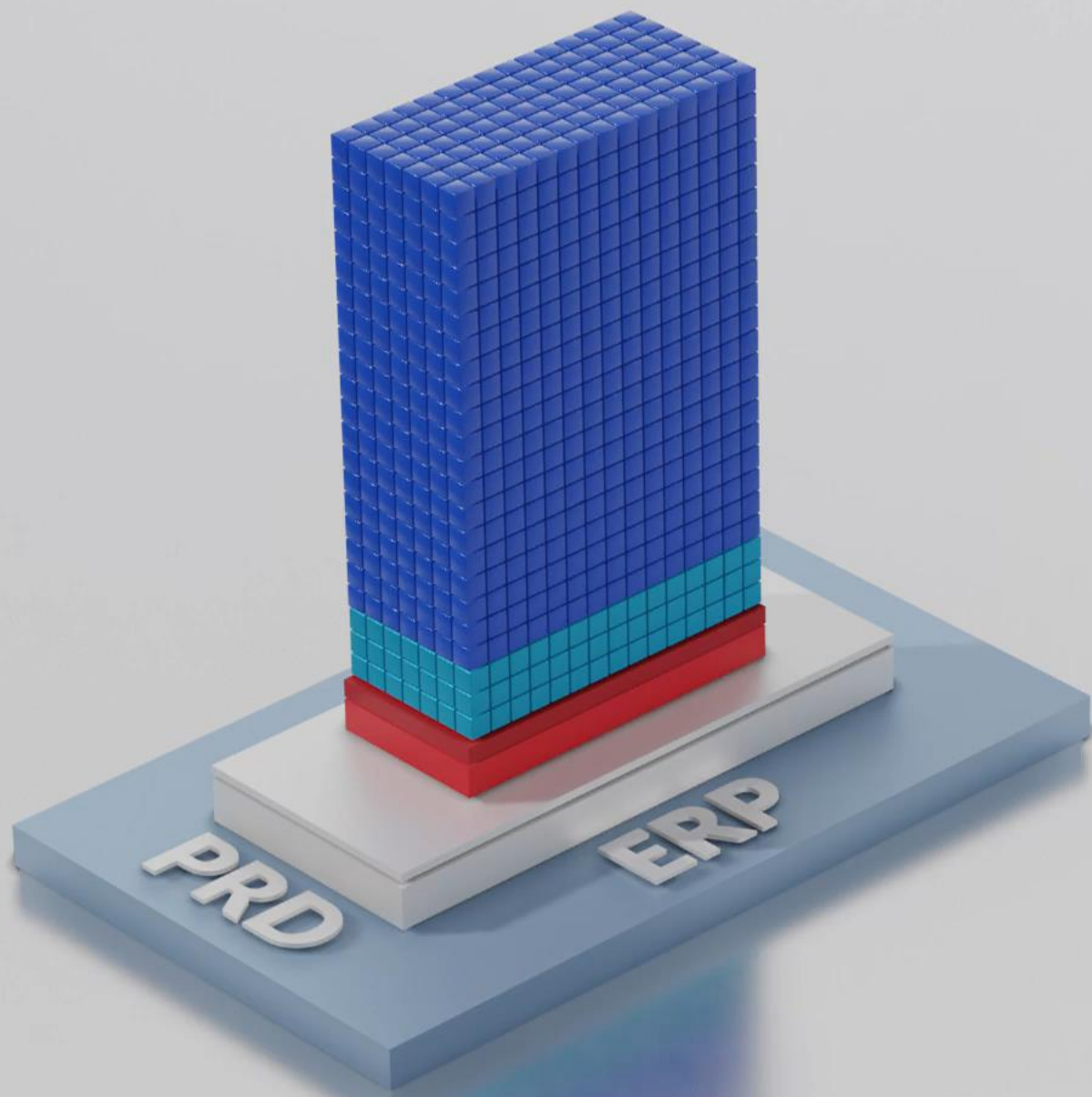


Identify PII data of your SAP system

Technical Data Discovery and Workshop

- High-level understanding of PII can be easy and simplistic – Name, Bank Account, Address, etc
- Understanding and aligning this to SAP table and fields, then determining mapping and relationships of the fields can be very difficult.
- An approach using discovery and mapping toolsets becomes an important step to understand the scale of PII and best management approaches.
- EPI-USE Labs Data Discovery toolset can be executed to check the SAP Dictionary for tables with likely PII data, providing summary list for analysis during workshops.





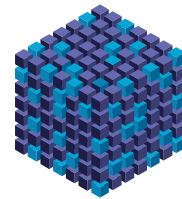
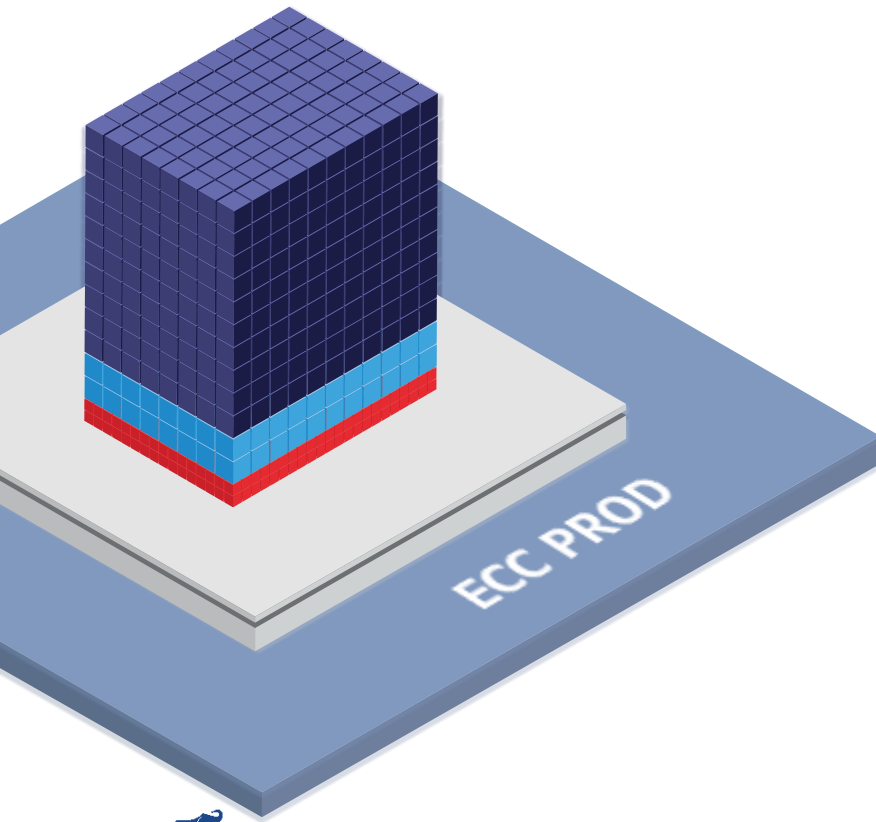
Data privacy workshop and system analysis

- A collaborative workshop followed by an in-depth system analysis
- A small professional services engagement requiring around one week of effort:
 - One day of workshops
 - Three days' system analysis
 - A final day preparing the output report
- Providing SAP solution expertise, with a background of implementing privacy projects in multiple industries throughout the globe. We can help mediate functional, compliancy and testing needs with real examples and impacts to lead to a clear requirement moving forward.
- After the analysis, you will be presented with a detailed report which outlines:
 - Production and non-production privacy requirements
 - Retention process flows
 - SAP object definitions and integrations of data
 - Cross system integrations and data alignments
 - Detailed table and field analysis showing the Personally Identifiable information in you SAP environment.



Secure Test Data

Data Sync Manager – intelligent test data scrambling



DATA SECURE



- In place scrambling of sensitive data
- Integrated with OS/CS
- Designed to handle large volumes





Production Data Removal

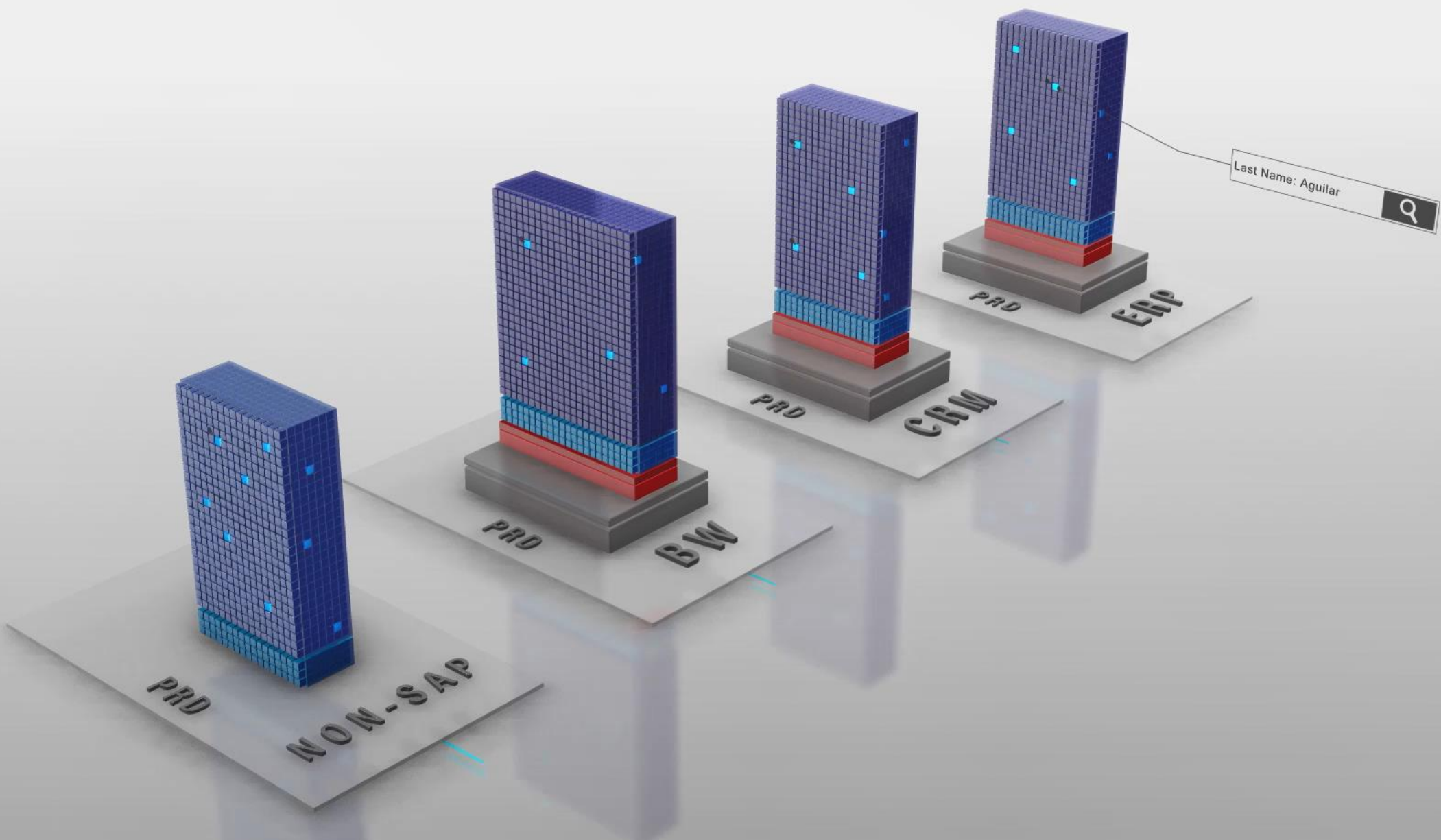
SAP Approaches

Archive - SAP Standard Archive or Archivelink. Can allow the removal of some datasets from the SAP database once all business process requirements and limits are met.

Mask - SAP Display time masking or UI Data Protection Masking. Obscure sensitive fields from the user GUI at display time, data remains unchanged in the SAP database.

EPI-USE Labs Data Redact™

Redact - Intelligently alter or clear sensitive or personally identifiable data in SAP systems without removing the complete record, while ensuring referential integrity is not at risk.





Four actions to manage privacy and compliance

1. Minimize the amount of data copied out of production
2. Identify and map the PII data in your SAP instance
3. Remove real personal data from test and development systems
4. Removal of personal data in production when no longer justified to hold



Thank you



epiuserlabs.com | sales@labs.epiuse.com | clientcentral.io | groupelephant.com